

**EDI for Pharmaceuticals and Medical Devices
in the Swiss Healthcare**

(June 1998)

Implementation Guide

Message

ORDERS

D.96A Rel.1.0.

medilog[®]

sanphar

in collaboration with

EAN [®]
(Schweiz, Suisse, Svizzera)

Implementation-Guide ORDERS D.96A EANCOM EDI for Pharmaceuticals and Medical Devices

1. Preface

This manual was edited for software engineers. Its purpose is to simplify the implementation of ORDERS as an EDI order for senders as well as for recipients. This manual is binding and should not induce interpretations. For multilateral EDI communications all partners should observe the same implementation guidelines.

The ORDERS' segment structure in hand is a subset of the international standard UN/EDIFACT. It is at the same time based on the guidelines by EAN International regarding the recommendations „The Application of EANCOM for the Trade of Healthcare Products“ dated February 1998. The codes and qualifiers mentioned in this implementation guide are a binding choice made by the project group „EDI für Medizinprodukte“. The complete code lists are available at EAN (Schweiz), Bale. Observing the current structure, syntax and codes simplifies the exchange of orders for all sharers in the Swiss health system.

Directory D.96A has to be available in your EDI converter.

The Implementation Guide Rel. 1.0. in hand was approved by the project group „EDI für Medizin-produkte“ on May 12, 1998. Represented in the project group were:

Hospitals: Kantonsspital St. Gallen and the Hirslanden-Gruppe
Companies: Johnson & Johnson Medical, B. Braun Medical, Absorin (Schweiz)
Salzmann Medico and Galenica
Branch unions: Sanphar, Geneva (representing the pharmaceutical companies)
ASMED and EAN (Schweiz)
Co-ordination: MediData, Lucerne

The Implementation Guide Rel. 1.0. in hand replaces the EDIPHARMA/MEDILOG manual for the pharmaceutical branch dated September 1996. This means an additional mapping for the sharers of the communication system EDIPHARMA/MEDILOG of Sanphar for dealing with orders of new partners. However, this is limited to a transitional period only, until all previous users of ORDERS have migrated to the present version D.96A. The transitional period should be completed by the end of 1999.

Experience shows that the slightest effort made to replace the „paper output“ already produced by the system by a file is done by the sender of an EDI message. This file has to be taken over by the converting and communication software and has to be passed on to the network as an EDIFACT message.

We recommend that the recipients check the incoming orders application - technically and verify their plausibility. The effort to do so is the same as with conventional applications. The explicit aim of EDI is automatized reception, processing and takeover of the order in the in-house application.

Further information on companies specialized in working out EDI solutions is available at:

Sanphar
1, Place du Port
1211 Genève 3
022 317 70 60
info@sanphar.ch

EAN (Schweiz)
Dornacherstrasse 230
4053 Basel
061 338 70 00
mail@ean.ch

MediData AG
Rösslimattstrasse 39
6002 Luzern
041 368 21 21
chmedsup@ibmmail.com

Implementation-Guide ORDERS D.96A EANCOM EDI for Pharmaceuticals and Medical Devices

FAQ01: Standardized use of the routing address

Application: For central EDI reception, including subsidiaries
For distributors representing other companies for sale, storage and distribution

Definitions:

Data element 0014 in segment group S003 **has to be used** as routing address in the UNB interchange header. („envelope“ containing the transferred file/data)

The routing address is **not** used for passing on messages within the EDIPHARMA/MEDILOG sharers, **nor** for passing on messages between networks.

Data element 0010 of the UNB header clearly identifies the recipient (mailbox owner) by his EAN number (according to Interchange Agreement or the EDIPHARMA/MEDILOG Sharers' Agreement respectively).

The routing address serves **solely** for subsequent internal processing purposes at the recipient's.

Only the EAN number of the subsidiary (the **EAN number of the company** represented by the recipient respectively) is **solely** used as routing address.

Consequences in carrying out:

In each case **the sender** has to send a separate message for each mailbox and the subsidiary assigned to it (for each company represented respectively).

In each case **the receiver** obtains a complete message (for each company represented respectively).

Conditions to be fulfilled by the sender:

The sender has stored the relation between article and corresponding subsidiary/represented company of the mail box owner in his article database (in his order processing/trading partner administration respectively).

Organisational advantages:

The EAN identification of the subsidiary (of the represented company respectively) does not have to be altered, even when it changes to another mailbox owner. The subsidiary (the represented company respectively) may be deposited at several mail box owners. A company represented by a recipient may additionally operate its own mail box with an own EAN number (as direct sender/recipient).

Literature references:

Title

Request at

CD-ROM EANCOM, Handbücher und Unterlagen zu EDI

EAN (Schweiz)
www.ean.ch

CD-ROM MEDWIN, Handbücher und Unterlagen zu EDI, Produkte-
und Partner Identifikation

Sanphar
www.sanphar.ch

EDI für Medizinprodukte Konzept und Leitfaden

EDI pour dispositifs médicaux Concept et guide

Adressen siehe Vorwort

The Application of EANCOM for the Trade of Healthcare Products

Adressen siehe Vorwort

Leitfaden EDI in Spitälern

EAN (Schweiz) / Sanphar

EDI Standards im Abrechnungswesen der Schweiz

Sanphar

MediData AG

Liste Teilnehmer bei EDIPHARMA/MEDILOG

www.medidata/edistand.html

Sanphar / www.sanphar.ch

Implementation-Guide ORDERS D.96A EANCOM EDI for Pharmaceuticals and Medical Devices

Segment/segment group	Segment number
UNB INTERCHANGE HEADER	1
UNH MESSAGE HEADER	2
BGM Beginning of message	3
DTM Date/time/period	4
SG1 RFF-DTM	
RFF Reference	5
DTM Date/time/period	6
SG2 NAD-LOC-SG3-SG5	
NAD Name and address	7
SG5 CTA-COM	
CTA Contact information	10
COM Communication contact	11
SG8 PAT-PCD	
PAT Payment terms basis	12
PCD Percentage details	13
SG9 TDT-SG10	
TDT Details of transport	14
SG10 LOC	
LOC Place/location identification	15
SG11 TOD	
TOD Terms of delivery or transport	16
SG25 LIN-PIA-QTY-DTM-MOA-SG28	
LIN Line item	17
PIA Additional product id	18
QTY Quantity	19
DTM Date/time/period	20
MOA Monetary amount	21
SG28 PRI	
PRI Price details	22
UNS SECTION CONTROL	23
UNT MESSAGE TRAILER	25
UNZ INTERCHANGE TRAILER	26

Notes:

- The segments are presented in the sequence in which they appear in the message. The segment or segment group tag is followed by the (M)andatory / (C)onditional indicator, the maximum number of occurrences and the segment description.
The segments have only been documented for the Dataelements used. For a full description see the EANCOM 97 manual.
- Reading from left to right, in column one, the data element tags and descriptions are shown, followed by in the second column the EDIFACT status (M or C), the field format, and the picture of the data elements. These first pieces of information constitute the original EDIFACT segment layout.
Following the EDIFACT information, EANCOM specific information is provided in the third, fourth, and fifth columns. In the third column a status indicator for the use of (C)onditional EDIFACT data elements (see 2.1 through 2.3 below), in the fourth column the restricted indicator (see point 3), and in the fifth column notes and code values used for specific data elements in the message.

- 2.1 (M)andatory data elements in EDIFACT segments retain their status in EANCOM.

Implementation-Guide ORDERS D.96A EANCOM EDI for Pharmaceuticals and Medical Devices

2.2 Additionally, there are five types of status for data elements with a (C)onditional EDIFACT status, whether for simple, component or composite data elements. These are listed below and can be identified when relevant by the following abbreviations:

- REQUIRED **R** Indicates that the entity is required and must be sent.
- ADVISED **A** Indicates that the entity is advised or recommended.
- DEPENDENT **D** Indicates that the entity must be sent in certain conditions, as defined by the relevant explanatory note.
- OPTIONAL **O** Indicates that the entity is optional and may be sent at the discretion of the user.
- NOT USED **N** Indicates that the entity is not used and should be omitted.

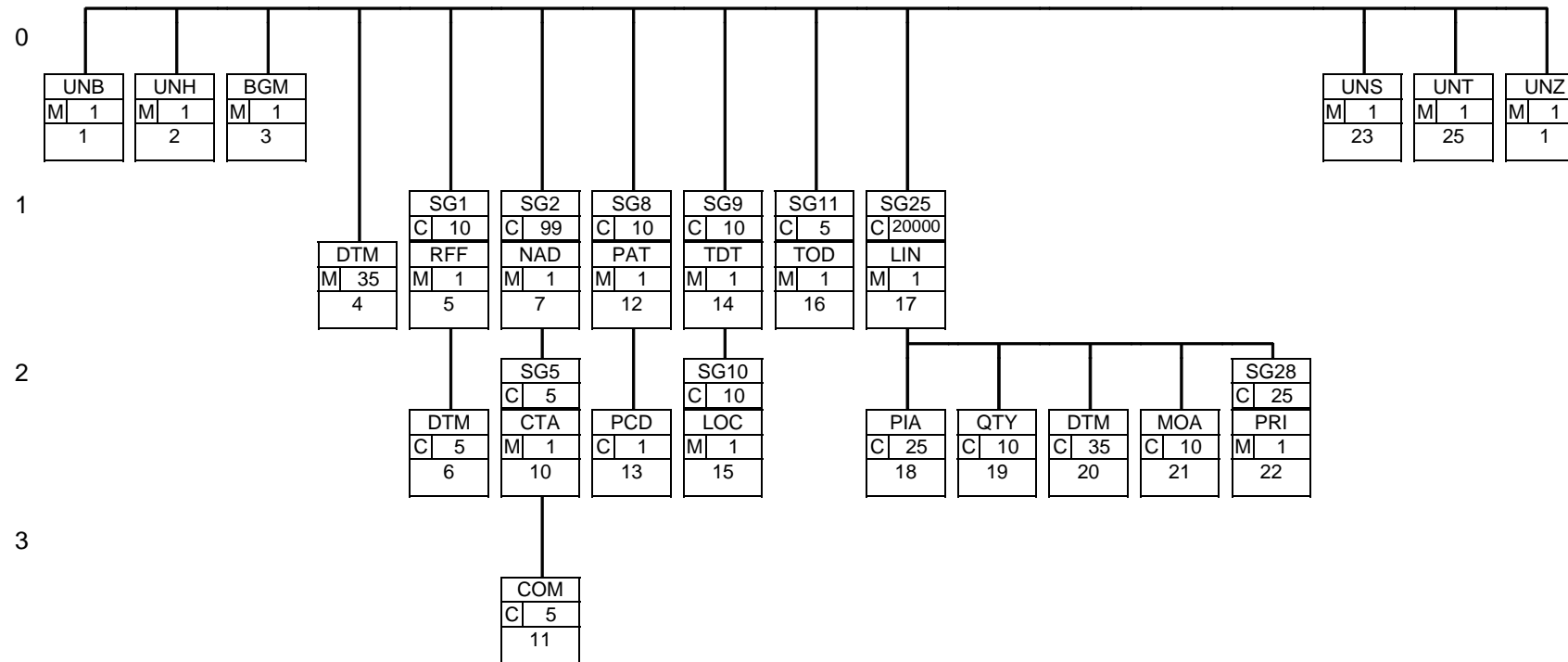
2.3 If a composite is flagged as **N, NOT USED**, all data elements within that composite will have blank status indicators assigned to them.

3. Status indicators detailed in the fourth column which directly relate to the code values detailed in the fifth column may have two values;

- RESTRICTED * A data element marked with an asterisk (*) in the fourth column indicates that the listed codes in column five are the only codes available for use with this data element, in this segment, in this message.
- OPEN All data elements where coded representation of data is possible and a restricted set of code values is not indicated are open (no asterisk in fourth column). The available codes are listed in the EANCOM Data Elements and Code Sets Directory. Code values may be given as examples or there may be a note on the format or type of code to be used.

© 1998 EAN (Switzerland)

Implementation-Guide ORDERS D.96A EANCOM EDI for Pharmaceuticals and Medical Devices



**Implementation-Guide ORDERS D.96A EANCOM
EDI for Pharmaceuticals and Medical Devices**

UNB - M 1- INTERCHANGE HEADER				
Function : To start, identify and specify an interchange.				
Segment number : 1				
	EDIFACT	EAN	*	Description
S001 SYNTAX IDENTIFIER	M			
0001 Syntax identifier	M a4	M		UNOB
0002 Syntax version number	M n1	M		3
S002 INTERCHANGE SENDER	M			
0004 Sender identification	M an..35	M		EPIN of Sender
0007 Partner identification code qualifier	C an..4	R		14 = EPIN
S003 INTERCHANGE RECIPIENT	M			
0010 Recipient identification	M an..35	M		EPIN of recipient
0007 Partner identification code qualifier	C an..4	R		14 = EPIN
0014 Routing address	C an..14			EPIN of routing address
S004 DATE/TIME OF PREPARATION	M			
0017 Date of preparation	M n6	M		JJMMTT
0019 Time of preparation	M n4	M		HHMM
0020 Interchange control reference	M an..14	M		Unique reference assigned by the sender to an interchange
S005 RECIPIENT'S REFERENCE PASSWORD	C			
0022 Recipient's reference/password	M an..14			Receiver's code
0026 Application reference	C an..14			Application reference, e.g. ORDERS
0029 Processing priority code	C a1			Priority
0031 Acknowledgement request	C n1			1 if any acknowledgement of receipt is required (technical receipt)
0032 Communications agreement ID	C an..35			
0035 Test indicator	C n1			1 = Test
Segment Notes.				
Example :				
UNB+UNOB:3+7612345000008:14+7612344000009:14:7612343000010+980414:1458+1+++ORDERS++1++1'				

**Implementation-Guide ORDERS D.96A EANCOM
EDI for Pharmaceuticals and Medical Devices**

UNH - M 1- MESSAGE HEADER				
Function : To head, identify and specify a message.				
Segment number : 2				
	EDIFACT	EAN	*	Description
0062 Message reference number	M an..14	M		Unique message reference assigned by the sender
S009 MESSAGE IDENTIFIER	M	M		
0065 Message type identifier	M an..6	M	*	ORDERS = Purchase order message Code identifying a type of message and assigned by its controlling agency.
0052 Message type version number	M an..3	M	*	D = Draft directory Version number of a message type.
0054 Message type release number	M an..3	M	*	96A = Version 96A Release number within the current message type version number (0052)
0051 Controlling agency	M an..2	M	*	UN = UN/ECE/TRADE/WP.4, United Nations Standard Messages (UNSM) Code identifying the agency controlling the specification, maintenance and publication of the message type.
0057 Association assigned code	C an..6	R	*	EAN008 = EAN Version control number. Code, assigned by the association responsible for the design and maintenance of the message type concerned, which further identifies the message.
Segment Notes.				
This segment is used to head, identify and specify a message.				
Example :				
UNH+1+ORDERS:D:96A:UN:EAN008'				

Implementation-Guide ORDERS D.96A EANCOM EDI for Pharmaceuticals and Medical Devices

BGM - M 1- Beginning of message				
Function	:	To indicate the type and function of a message and to transmit the identifying number.		
Segment number	:	3		
	EDIFACT	EAN	*	Description
C002 DOCUMENT/MESSAGE NAME	C	R		
1001 Document/message name, coded	C an..3	R	*	220 = Order 224 = Rush order 226 = Call off order
1131 Code list qualifier	C an..3	N		
3055 Code list responsible agency, coded	C an..3	D	*	9 = EAN (International Article Numbering association)
1004 Document/message number	C an..35	R		Reference number assigned to the document/message by the issuer
1225 Message function, coded	C an..3	R	*	7 = Duplicate 9 = Original (default) 31 = Copy
<p>Segment Notes.</p> <p>This segment is used to indicate the type and function of a message and to transmit the identifying number.</p> <p>Example :</p> <p>BGM+220::9+ORDERNUMBER123+9'</p>				

**Implementation-Guide ORDERS D.96A EANCOM
EDI for Pharmaceuticals and Medical Devices**

DTM - M 35- Date/time/period				
Function : To specify date, and/or time, or period.				
Segment number : 4				
	EDIFACT	EAN	*	Description
C507 DATE/TIME/PERIOD	M	M		
2005 Date/time/period qualifier	M an..3	M	*	2 = Delivery date/time, requested 61 = Cancel if not delivered by this date 63 = Delivery date/time, latest 64 = Delivery date/time, earliest 77 = Requested for delivery week commencing (EAN Code) 137 = Document/message date/time (default) 200 = Pick-up/collection date/time of cargo
2380 Date/time/period	C an..35	R		Date N/8
2379 Date/time/period format qualifier	C an..3	R		102 = CCYYMMDD (default) 203 = CCYYMMDDHHMM 616 = CCYYWW Specification of the representation of a date
<p>Segment Notes.</p> <p>This segment is used to specify the date of the Order and, where required, requested dates concerning the delivery of the goods.</p> <p>DE 2005: Identification of the 'Document/message date/time' (code value 137) is mandatory in the purchase order message.</p> <p>DTM+63:199710181430:203'</p> <p>This example indicates that the latest date/time for the delivery is 2:30pm on the 18th of October 1997.</p> <p>Guide Example :</p> <p>DTM+2:19980830:102'</p>				

**Implementation-Guide ORDERS D.96A EANCOM
EDI for Pharmaceuticals and Medical Devices**

SG1 - C					10- RFF-DTM					
RFF - M					1- Reference					
Function :					To specify a reference.					
Segment number :					5					
					EDIFACT	EAN	*	Description		
C506 REFERENCE					M	M		CR = Customer reference number CT = Contract number PD = Promotion deal number PL = Price list number		
1153 Reference qualifier					M an..3	M				
1154 Reference number					C an..35	R				
Segment Notes.										
This segment is used to specify other references which relate to the transmission, for example, contract numbers, price list numbers, etc. The references given at this point are valid for the whole order unless superseded by references at line level.										
Example :										
RFF+CT:REF1234'										

**Implementation-Guide ORDERS D.96A EANCOM
EDI for Pharmaceuticals and Medical Devices**

SG1 - C					10- RFF-DTM				
DTM - C					5- Date/time/period				
Function :					To specify date, and/or time, or period.				
Segment number :					6				
		EDIFACT	EAN	*	Description				
C507	DATE/TIME/PERIOD	M	M						
2005	Date/time/period qualifier	M an..3	M	*	171 = Reference date/time				
2380	Date/time/period	C an..35	R						
2379	Date/time/period format qualifier	C an..3	R		102 = CCYYMMDD				
Segment Notes.									
This segment is used to specify dates relating to the references given in the preceding RFF segment.									
Example :									
<i>DTM+171:19980825:102'</i>									

**Implementation-Guide ORDERS D.96A EANCOM
EDI for Pharmaceuticals and Medical Devices**

SG2 - C					99- NAD-LOC-SG3-SG5				
NAD - M					1- Name and address				
Function :					To specify the name/address and their related function, either by CO82 only and/or structured by CO80 thru 3207.				
Segment number :					7				
		EDIFACT	EAN	*	Description				
3035	Party qualifier	M an..3	M		BY = Buyer CN = Consignee DP = Delivery party DS = Distributor IV = Invoicee MF = Manufacturer of goods SE = Seller SU = Supplier				
C082	PARTY IDENTIFICATION DETAILS	C	A						
3039	Party id. identification	M an..35	M		EAN Location Number - Format n13				
1131	Code list qualifier	C an..3	N						
3055	Code list responsible agency, coded	C an..3	R	*	9 = EAN (International Article Numbering association)				
<p>Segment Notes.</p> <p>This segment is used to identify the trading partners involved in the Order process. Identification of the buyer and supplier of goods and services is mandatory using DE's 3035 and C082. Additionally, the invoicee and/or delivery party should be specified if different to the buyer.</p> <p>The delivery address given in NAD at header level is the main delivery address for all line items. It can however be overridden at line level by the use of Segment Group 33 LOC/QTY/DTM to indicate split deliveries. If specific information is needed for this address such as Dock Number, etc, it must be provided in the following LOC segment using DE 3227.</p> <p>Example :</p> <p>NAD+MF+4012345500000::9'</p>									

**Implementation-Guide ORDERS D.96A EANCOM
EDI for Pharmaceuticals and Medical Devices**

SG2 - C	99- NAD-LOC-SG3-SG5
SG5 - C	5- CTA-COM
CTA - M	1- Contact information
Function :	To identify a person or a department to whom communication should be directed.
Segment number :	10
	EDIFACT EAN * Description
3139 Contact function, coded	C an..3 R IC = Information contact OC = Order contact ODP = Department/person responsible for processing purchase order (EAN Code) PD = Purchasing contact SR = Sales representative or department
C056 DEPARTMENT OR EMPLOYEE DETAILS	C O
3413 Department or employee identification	C an..17 O
3412 Department or employee	C an..35 O
Segment Notes.	
This segment is used to identify contact details for the party specified in the previous NAD segment. The EAN location number is particularly suitable for this purpose.	
Example :	
CTA+OC+SALES:P FORGET'	

**Implementation-Guide ORDERS D.96A EANCOM
EDI for Pharmaceuticals and Medical Devices**

SG2 - C	99- NAD-LOC-SG3-SG5		
SG5 - C	5- CTA-COM		
COM - C	5- Communication contact		
Function :	To identify a communication number of a department or a person to whom communication should be directed.		
Segment number :	11		
	EDIFACT EAN * Description		
C076 COMMUNICATION CONTACT	M M		
3148 Communication number	M an..512	M	
3155 Communication channel qualifier	M an..3	M	EM = Electronic mail FX = Fax TE = Telephone TL = Telex XF = X.400
<p>Segment Notes.</p> <p>This segment identifies the communications number, and type of communications, for the person or department identified in the preceding CTA segment.</p> <p>Example :</p> <p>COM+0613387021:TE'</p>			

**Implementation-Guide ORDERS D.96A EANCOM
EDI for Pharmaceuticals and Medical Devices**

SG8 - C					10- PAT-PCD				
PAT - M					1- Payment terms basis				
Function :					To specify the payment terms basis.				
Segment number :					12				
		EDIFACT	EAN	*	Description				
4279	Payment terms type qualifier	M an..3	M		5 = Discount not applicable 8 = Basic discount offered 22 = Discount				
C110	PAYMENT TERMS	C	O						
4277	Terms of payment identification	M an..17	M						
C112	TERMS/TIME INFORMATION	C	O						
2475	Payment time reference, coded	M an..3	M						
2009	Time relation, coded	C an..3	O						
2151	Type of period, coded	C an..3	O						
2152	Number of periods	C n..3	O						
Segment Notes.									
This segment is used by the issuer of the order to request special payment terms for the current order only.									
Example :									
<i>PAT+5+6+1:1:D:30'</i>									

**Implementation-Guide ORDERS D.96A EANCOM
EDI for Pharmaceuticals and Medical Devices**

SG8 - C					10- PAT-PCD					
PCD - C					1- Percentage details					
Function :					To specify percentage information.					
Segment number :					13					
					EDIFACT	EAN	*	Description		
C501 PERCENTAGE DETAILS					M	M				
5245 Percentage qualifier					M an..3	M		12 = Discount		
5482 Percentage					C n..10	R		Percentage of a specified amount.		
5249 Percentage basis, coded					C an..3	O				
Segment Notes.										
This segment is used to specify percentages which will be allowed or charged if an invoice is not paid to terms.										
Example :										
PCD+12:5:1'										

**Implementation-Guide ORDERS D.96A EANCOM
EDI for Pharmaceuticals and Medical Devices**

SG9 - C					10- TDT-SG10				
TDT - M					1- Details of transport				
Function :					To specify the transport details such as mode of transport, means of transport, its conveyance reference number and the identification of the means of transport.				
Segment number :					14				
		EDIFACT	EAN	*	Description				
8051	Transport stage qualifier	M an..3	M		12 = At departure 13 = At destination Qualifier giving a specific meaning to the transport details.				
8028	Conveyance reference number	C an..17	O		Reference number covering the transport.				
C220	MODE OF TRANSPORT	C	A						
8067	Mode of transport, coded	C an..3	R		10 = Maritime transport 20 = Rail transport 30 = Road transport 40 = Air transport 50 = Mail 60 = Multimodal transport Coded method of transport used for the carriage of goods.				
C228	TRANSPORT MEANS	C	O						
8179	Type of means of transport identification	C an..8	D		25 = Rail express 31 = Truck 41 = Air freight (EAN Code) 42 = Surface air lifting (EAN Code) 51 = Parcel post (EAN Code - book) 52 = Mail express (EAN Code - book) Code defining the type of the means of transport being utilized.				
8178	Type of means of transport	C an..17	D		Means of transport				
C040	CARRIER	C	O						
3127	Carrier identification	C an..17	A		EAN Location Number - Format 13n				
1131	Code list qualifier	C an..3	O						
3055	Code list responsible agency, coded	C an..3	A	*	9 = EAN (International Article Numbering association) 60 = Assigned by national trade agency				
Segment Notes.									
This segment is used to specify transport services provided for the delivery of the invoiced line items, such									

Implementation-Guide ORDERS D.96A EANCOM EDI for Pharmaceuticals and Medical Devices

as express transport services.

Dependency Notes :

Data Elements 8179 and 8178 are only used when the type of transport must be specifically identified, i.e. where a generic description such as road transport is unsuitable.

Example:

TDT+13+REF-1212+30+31:TRUCK+76234560000::9'

**Implementation-Guide ORDERS D.96A EANCOM
EDI for Pharmaceuticals and Medical Devices**

SG9 - C		10- TDT-SG10	
SG10 - C		10- LOC	
LOC - M		1- Place/location identification	
Function	:	To identify a country/place/location/related location one/related location two.	
Segment number	:	15	
	EDIFACT	EAN	* Description
3227 Place/location qualifier	M an..3	M	8 = Place of destination
C517 LOCATION IDENTIFICATION	C	A	
3225 Place/location identification	C an..25	A	EAN Location Number - Format n13
1131 Code list qualifier	C an..3	O	
3055 Code list responsible agency, coded	C an..3	O	9 = EAN (International Article Numbering association)
Segment Notes.			
This segment is used to specify any locations related to the TDT segment .			
DE 3225: For identification of locations it is recommended to use EAN location number.			
Example :			
LOC+8+761234500011::9'			

**Implementation-Guide ORDERS D.96A EANCOM
EDI for Pharmaceuticals and Medical Devices**

SG11 - C		5- TOD		
TOD - M		1- Terms of delivery or transport		
Function	:	To specify terms of delivery or transport.		
Segment number	:	16		
		EDIFACT	EAN	* Description
4055	Terms of delivery or transport function, coded	C an..3	R	4 = Collected by customer
4215	Transport charges method of payment, coded	C an..3	O	
C100	TERMS OF DELIVERY OR TRANSPORT	C	A	
4053	Terms of delivery or transport, coded	C an..3	R	
1131	Code list qualifier	C an..3	D	
3055	Code list responsible agency, coded	C an..3	D	
4052	Terms of delivery or transport	C an..70	O	
4052	Terms of delivery or transport	C an..70	O	
Segment Notes.				
This segment is used to specify the terms of delivery for the complete order.				
Dependency Notes :				
Data elements 1131 and 3055 are only used if specific terms of delivery codes, which are outside those recommended by EDIFACT, are being used.				
Example:				
TOD+4+CC+EXW::9::A'				

**Implementation-Guide ORDERS D.96A EANCOM
EDI for Pharmaceuticals and Medical Devices**

SG25 - C 200000- LIN-PIA-QTY-DTM-MOA-SG28				
LIN - M 1- Line item				
Function : To identify a line item and configuration.				
Segment number : 17				
	EDIFACT	EAN	*	Description
1082 Line item number	C n..6	R		Application generated number of the count of the order lines.
1229 Action request/notification, coded	C an..3	N		Serial number designating each separate item within a series of articles
C212 ITEM NUMBER IDENTIFICATION	C	D		
7140 Item number	C an..35	R		Format n..14 EAN-8, UPC-A, EAN-13, or DUN-14 - this is the number of the article being ordered.
7143 Item number type, coded	C an..3	R	*	EN = International Article Numbering Association (EAN) UP = UPC (Universal product code)
1131 Code list qualifier	C an..3	N		
3055 Code list responsible agency, coded	C an..3	O		9 = EAN (International Article Numbering association)
<p>Segment Notes.</p> <p>This segment is used to identify the item being ordered. The detail section of the Purchase Order is formed by a repeating group of segments, always starting with the LIN segment.</p> <p>Dependency Notes :</p> <p>DE C212: This composite will only be used for the identification of EAN/UPC codes. If another coding structure is required, e.g. HIBC, then this composite will not be used and the code will be detailed in the PIA segment.</p> <p>DE C829: This composite is only used when sub-lines are required.</p> <p>DE 7083: This DE is only used when sub-lines are required.</p> <p>Example: LIN+1++76123450000221:EN::9'</p>				

**Implementation-Guide ORDERS D.96A EANCOM
EDI for Pharmaceuticals and Medical Devices**

SG25 - C 200000- LIN-PIA-QTY-DTM-MOA-SG28				
PIA - C 25- Additional product id				
Function : To specify additional or substitutional item identification codes.				
Segment number : 18				
	EDIFACT	EAN	*	Description
4347 Product id. function qualifier	M an..3	M	*	1 = Additional identification AC = HIBC (Health Industry Bar Code) GD = Industry sector article group number/product classification code (Pharmacode) MF = Manufacturer's (producer's) article number NB = Batch number SA = Supplier's article number
C212 ITEM NUMBER IDENTIFICATION	M	M		
7140 Item number	C an..35	R		
7143 Item number type, coded	C an..3	R		
1131 Code list qualifier	C an..3	N		
3055 Code list responsible agency, coded	C an..3	O		9 = EAN (International Article Numbering association)
<p>Segment Notes.</p> <p>This segment is used to specify additional or substitutional item identification codes such as a buyer's, or seller's item number.</p> <p>DE 4347: Product Id function coded has the following restricted coded functions:</p> <p>1 - Additional Identification - To provide an additional identity for the product identified in the LIN segment. The additional identification can consist of :</p> <p>A supplemental identification which provides more information complementary to the main article number provided in the LIN segment, e.g., a batch number, promotional variant number, product group number, etc.</p> <p>An alternative identification which may be used where no main article number has been provided in the LIN segment, e.g., a buyers article number, an HIBC code, etc.</p> <p>2 - Identification for substitution - To provide the article number of a product which can substitute the product identified by the article number provided in the LIN segment when the latter is temporarily unavailable, e.g., a similar or identical product coded with a different EAN number (article coded in a different country), a different size unit of the same product, a similar product with for example a different brand name.</p> <p>5 - Product Identification - To provide the primary product identification code when no EAN/UPC article number has been provided in the LIN segment. EAN/UPC article number should not be used in conjunction with this code value. It should be noted that when this code is used the product code specified here is the code which should be used for invoicing purposes.</p>				

Implementation-Guide ORDERS D.96A EANCOM EDI for Pharmaceuticals and Medical Devices

9 - No substitution accepted - The buyer will not accept any other product code than the one specified in the LIN segment. The code specified in the LIN segment is repeated in the PIA segment to confirm the only code acceptable.

Example :

PIA+1+ABC:SA::9'

**Implementation-Guide ORDERS D.96A EANCOM
EDI for Pharmaceuticals and Medical Devices**

SG25 - C 200000- LIN-PIA-QTY-DTM-MOA-SG28				
QTY - C 10- Quantity				
Function : To specify a pertinent quantity.				
Segment number : 19				
	EDIFACT	EAN	*	Description
C186 QUANTITY DETAILS	M	M		
6063 Quantity qualifier	M an..3	M	*	21 = Ordered quantity (default) 47 = Invoiced quantity 61 = Return quantity 83 = Backorder quantity 84 = Urgent delivery quantity 94 = Substitutional quantity 131 = Delivery quantity 192 = Free goods quantity
6060 Quantity	M n..15	M		
6411 Measure unit qualifier	C an..3	D		GRM = Gram KGM = Kilogram MTR = Metre PCE = Piece LTR = Litre (1 dm3) MLT = Millilitre NMP = number of packs NPL = number of parcels PR = pair
<p>Segment Notes.</p> <p>This segment is used to specify the total quantity ordered for the current line identified in the LIN segment.</p> <p>If split deliveries are being used, the quantities for the split delivery are specified in segment group 33. The totals for all quantities expressed in the QTY's at segment group level must equal the value in this QTY segment.</p> <p>DE 6063: Code value '59' is only to be used in the orders message for confirmation purposes and not to change any information previously agreed and contained in a price or product catalogue.</p> <p>Dependency Notes :</p> <p>DE 6411: This DE is only used if the product ordered is a variable quantity product.</p> <p>Example :</p> <p>QTY+21:48:KGM'</p>				

**Implementation-Guide ORDERS D.96A EANCOM
EDI for Pharmaceuticals and Medical Devices**

SG25 - C 200000- LIN-PIA-QTY-DTM-MOA-SG28				
DTM - C 35- Date/time/period				
Function : To specify date, and/or time, or period.				
Segment number : 20				
	EDIFACT	EAN	*	Description
C507 DATE/TIME/PERIOD	M	M		
2005 Date/time/period qualifier	M an..3	M	*	2 = Delivery date/time, requested 74 = Delivery date/time, requested for (prior to and including) 36 = Expiry date
2380 Date/time/period	C an..35	R		
2379 Date/time/period format qualifier	C an..3	R		102 = CCYYMMDD (default)
Segment Notes.				
This segment is used to specify the dates (and possibly times) associated with the delivery or collection of the currently identified product.				
Example :				
<i>DTM+2:19980910:102'</i>				

**Implementation-Guide ORDERS D.96A EANCOM
EDI for Pharmaceuticals and Medical Devices**

SG25 - C 200000- LIN-PIA-QTY-DTM-MOA-SG28				
MOA - C 10- Monetary amount				
Function : To specify a monetary amount.				
Segment number : 21				
	EDIFACT	EAN	*	Description
C516 MONETARY AMOUNT	M	M		
5025 Monetary amount type qualifier	M an..3	M		52 = Discount amount 146 = Unit price 203 = Line item amount
5004 Monetary amount	C n..18	R		
Segment Notes.				
This segment is used for two purposes, firstly, when allowances/charges are involved, to indicate net amounts for the line, and secondly, to provide valuation amounts, e.g., customs value.				
Example :				
MOA+203:1253.42'				

**Implementation-Guide ORDERS D.96A EANCOM
EDI for Pharmaceuticals and Medical Devices**

SG25 - C 200000- LIN-PIA-QTY-DTM-MOA-SG28				
SG28 - C 25- PRI				
PRI - M 1- Price details				
Function : To specify price information.				
Segment number : 22				
	EDIFACT	EAN	*	Description
C509 PRICE INFORMATION	C	R		
5125 Price qualifier	M an..3	M		AAA = Calculation net - Note 1 AAE = Information price, excluding allowances or charges, including taxes AAF = Information price, including allowances or charges, and taxes
5118 Price	C n..15	R		
5375 Price type, coded	C an..3	O		
5387 Price type qualifier	C an..3	O		
5284 Unit price basis	C n..9	D		
6411 Measure unit qualifier	C an..3	D		GRM = Gram KGM = Kilogram MTR = Metre PCE = Piece LTR = Litre (1 dm3) MLT = Millilitre NMP = number of packs NPL = number of parcels
Segment Notes.				
This segment is used to detail the price for the current product identified in the LIN segment. The calculation price detailed in the Purchase Order will always be the Net Unit Price, i.e., Gross Price + Charges – Allowances.				
Note 1 : The price stated is the net price including all allowances and charges and excluding taxes. Allowances and charges may be stated for information purposes only.				
Example : price per hundred PRI+AAA:::100:KGM'				
Dependency Notes :				
Data elements 5284 and 6411 are used when a product is a variable quantity product, e.g. price per 200 kilos, or when the unit of measure for purchasing, delivery, and invoicing are different for a product, e.g. sugar is not a variable quantity product but ordered and delivered in packs, and invoiced in kilos or tonnes.				
Guide Example :				
PRI+AAA:14.58:CT:::KGM'				

**Implementation-Guide ORDERS D.96A EANCOM
EDI for Pharmaceuticals and Medical Devices**

UNS - M 1- SECTION CONTROL				
Function : To separate header, detail, and summary sections of a message.				
Segment number : 23				
	EDIFACT	EAN	*	Description
0081 Section identification	M a1	M	*	S = Detail/summary section separation
Segment Notes.				
This segment is used to separate the detail and summary sections of the message.				
Example :				
UNS+S'				

**Implementation-Guide ORDERS D.96A EANCOM
EDI for Pharmaceuticals and Medical Devices**

UNT - M 1- MESSAGE TRAILER				
Function : To end and check the completeness of a message.				
Segment number : 25				
	EDIFACT	EAN	*	Description
0074	Number of segments in a message	M n..6	M	The total number of segments in the message is detailed here.
0062	Message reference number	M an..14	M	The message reference numbered detailed here should equal the one specified in the UNH segment.
<p>Segment Notes.</p> <p>This segment is a mandatory UN/EDIFACT segment. It must always be the last segment in the message.</p> <p>Example :</p> <p>UNT+21+1'</p>				

**Implementation-Guide ORDERS D.96A EANCOM
EDI for Pharmaceuticals and Medical Devices**

UNZ - M 1- INTERCHANGE TRAILER				
Function : To end and check the completeness of an interchange.				
Segment number : 26				
	EDIFACT	EAN	*	Description
0036 Interchange control count	M n..6	M		Count of the number of messages in an interchange
0020 Interchange control reference	M an..14	M		Interchange reference number corresponding to data element 0020 from UNB
Segment Notes.				
Interchange Trailer				
Example :				
UNZ+1+1'				